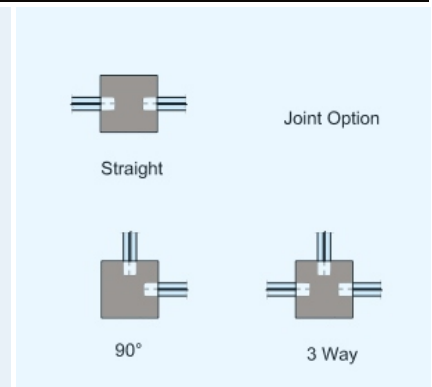
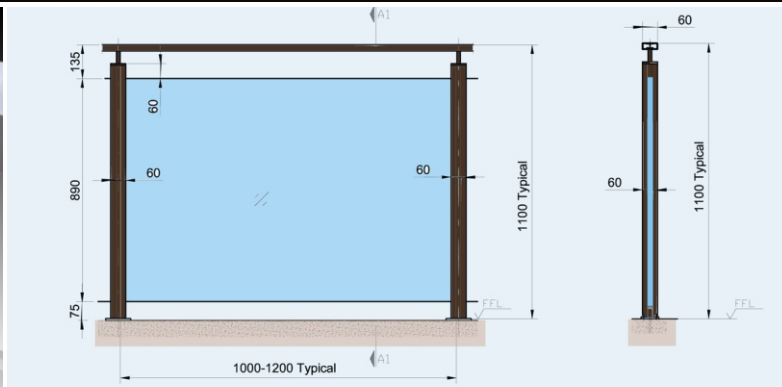
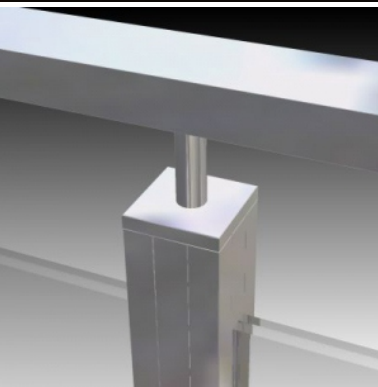




In Aluminum
Powder Coated
Sections



Specifications :

| Pitch | Glass | Interlayer | Height | Linear Load |
|---------|-------------|-----------------------|--------|-------------|
| 1000 mm | 5+1.52+5 mm | PVB I Sentryglas Plus | 1100 | 1.0 kN/m |
| 1200 mm | 6+1.52+6 mm | PVB I Sentryglas Plus | 1100 | 0.75 kN/m |

Note:

Please contact us for other load values. The load values above are indicative only for preliminary selection. Please contact us with full load details for proper design.

Advantages :

It is the ideal system for balconies, stairs and building fences with high architectural standards. It offers an impressive and functional result.

- Excellent design.
- Unobstructed clear views.
- Easy to clean.
- No maintenance required.
- Economical.
- Complies with most Standards.
- Patented system

GSC Suggests :

GSC's policy has always been to provide completely safe and reliable products to its customers. For us both passive and active safety is important. GSC, therefore recommends to use Tempered Laminated glasses with 8, 10 and 12 mm thickness and an interlayer consisting of 0.76 to 1.52 mm PVB layer or Sentry Glass plus layer for additional safety. The use of a handrail is recommended, since it considerably improves the mechanical support for the entire construction.